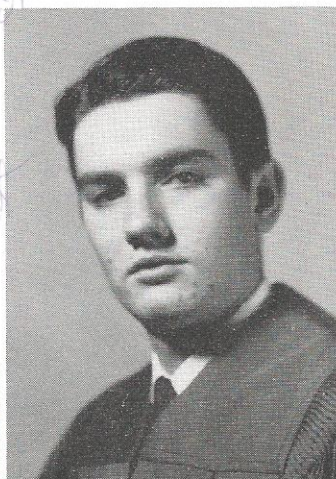


*Lots of luck to
you next year. Same
as if everybody needs
lots of it at all times.
Always,
Margaret*



LEGARE SMITH

Busybody. . . LAIR 4;
WILDCAT 4; Future Teachers'
4,3; Dramatics Club 4; Jr.
Play Cast; Travel Club 3,2;
Operators Club 3,2,1; Stu-
dent Council 2,1.

ANNE SMOAK

Dependable. . . Miss Hi
Miss; Future Teachers (V.P.)
4,3,2,1; Beta Club 4(Dist.
Sec.), 3; WILDCAT 4; LAIR
Editor 4; Jr. Play Cast 3;
Pres. Cabinet 4; Dance Club
3; Sec. & Treas. Jr. Class;
LAIR 3,2; Student Council 2;
Spanish Club 2(Treas.).

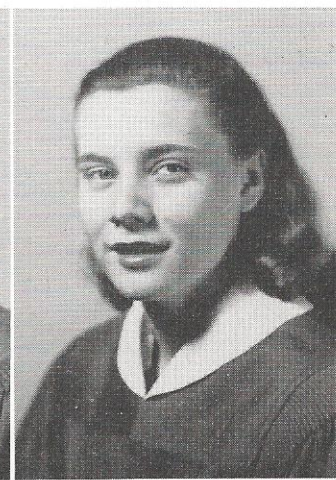
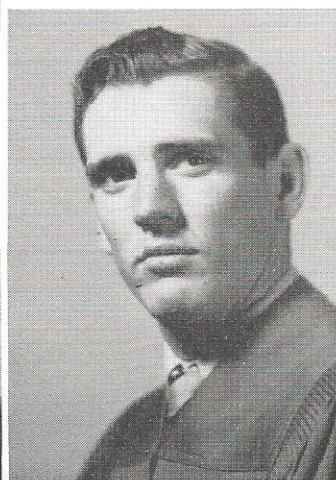


EVELYN SMOAK

Happy-go-lucky. . . Home-
coming Queen; Student Coun-
cil 4; Cheerleader 4; Dance
Club 3; J.H.A. 3;

MARGARET STANFILED

Sincere. . . WILDCAT 4;
F.B.L.A. 4,3,2; LAIR 4; J.
H.A. 2,1; Glee Club 1.

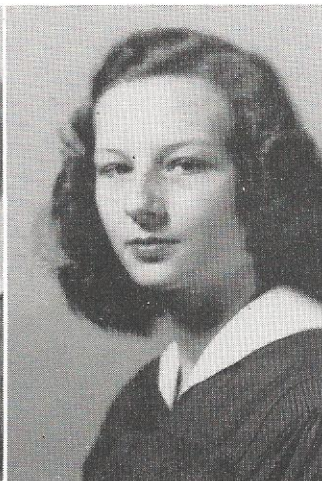


GARY ULMER

Perfect country gentle-
man. . . F.F.A. 4(Pres.), 2,
1; Beta Club 4; Football 4,
3; Track 4,3; Basketball 4,
3; Jr. Rotarian 4; Sportsman's
Club 1.

GLORIA VARNER

Tiny. . . J.H.A. 4,3,2,1
(Treas.); D.E. Club 4(Sec.);
LAIR 4; Dance Club 2(Pres.).



DORIS WARREN

Sweet disposition. . . J.
H.A. 4,3,2,1; F.B.L.A. 3.

BETTY ANN WILLIAMS

Contagious giggles. . .
Music Club 4; D.E. Club 4;
J.H.A. 3,2(Co. Sec.), 1; Trave-
l Club 2; Glee Club 1.

*Lots of luck to
a very cute plus
nice girl.
Gloria*