

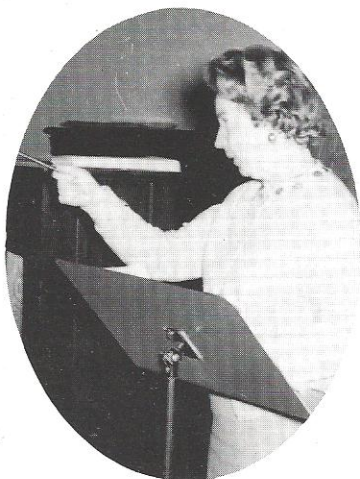


The Girls' Double Sextet, a small group which consists of the best blend of voices for soprano, second soprano, and alto, performs when it is not possible for the whole Glee Club to perform. The Double Sextet performed at various club meetings over the holidays. The members of the Sextet are: Lynette Lawson, Susan Rivers, Jane Zeigler, Diane Bales, Anita Coggin, Carol Strickland, Linda Ramsey, Cathy Cole, Camille Reynolds, Patsy Lyons, Jean Strickland, and Suzanne Bone.

The Boys' Quartet performed numerous times this year. The members are: Jimmy White, Jimmie Ringer, Bill Harkey, and Herman Dantzler. Judy Walker is accompanist for the Boys' Glee Club.

Many Glee Club members tried out for All-State this year. The following represent Waltherboro High School as members of the All-State Chorus: Anita Coggin, Carol Strickland, Susan Rivers, Patsy Lyons, Camille Reynolds, Jane Zeigler, and Herman Dantzler.

MRS. D.M. BUCKNER
Director



"Sing along with D.M. "

