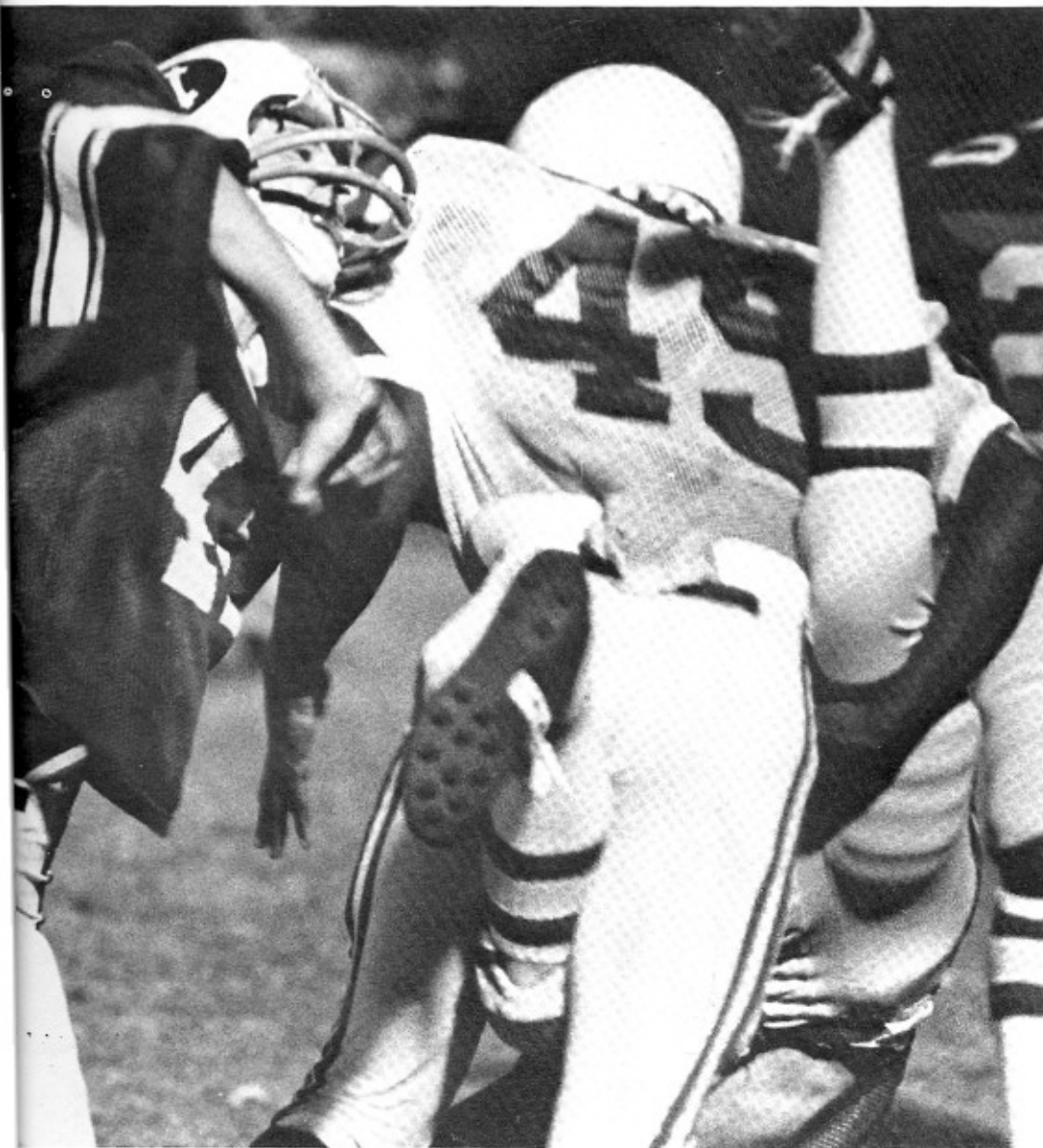


Below: Row 1: Jimmy Jarvis, Lawrence Smalls, Donald Hill, Frank McCoy, John Brown. Row 2: Lester Fields, Derrick Smith, Steve Rhode, Tony Stephens, Randy Jenkins, Coach Driggers.

Bottom: Head first is the only way to go as shown by Greg Clayton using his patent technique.



Defensive Backs: Top: Kent Boone, Jimmy Reed, Mike Hardee. Middle: Coach Burke, Vincent Bryan, Billy Reed, Mark Glover. Bottom: Jimmy Bennett, Arnie Gilliard, Johannfrod Middleton.



Coach Burke with the familiar sign of the hat turned backwards, trains his troops.