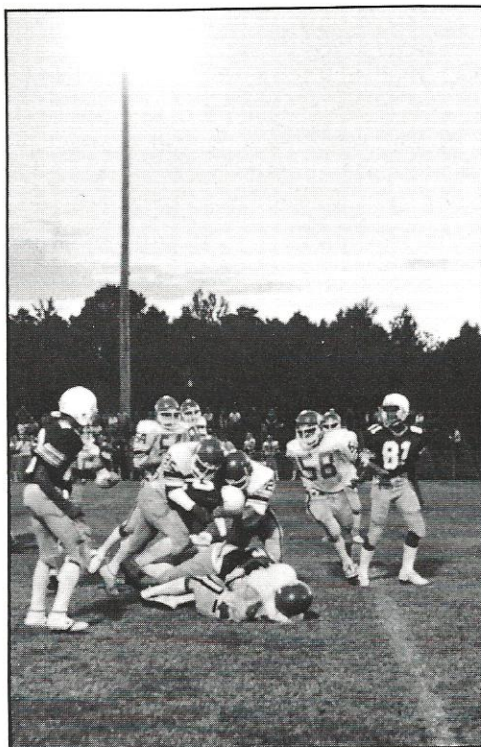


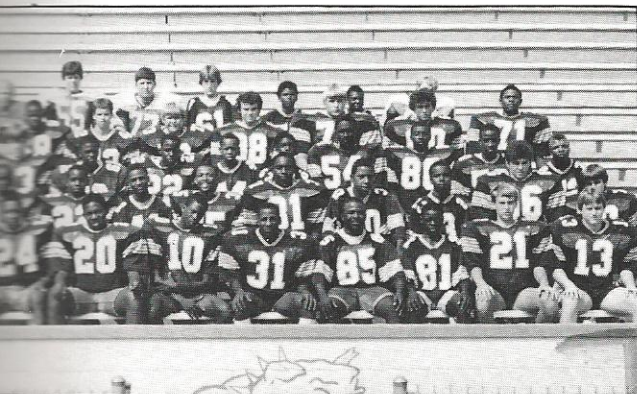


| | WHS | OPP |
|------------------|-----------|----------|
| Beaufort | Cancelled | |
| North Charleston | 27 | 8 |
| Wando | 26 | 0 |
| Berkeley | 18 | 28 |
| Stratford | 14 | 6 |
| James Island | 0 | 19 |
| Summerville | 6 | 21 |
| Goose Creek | 7 | 6 |
| Georgetown | 7 | 8 |
| Burke | 27 | 8 |
| | 5 Wins | 4 Losses |



THE BULLPUPS' OFFENSIVE UNIT, led by quarterback Joey Robertson, proved itself to be quite effective in many important games. Winston Syders, another valuable part of the offensive attack, pushes forward for extra yardage.

RONALD MITCHELL AND MIGUEL KOGER destroy a Stratford back as Billy Hinz comes in for support. This is just one example of the outstanding Bullpup defense that held opponents to only an eleven point average per game.



J.V. FOOTBALL—Front Row: J. Robertson, L. Penfield, D. Still, M. Geddis, K. Bowman, M. Koger, G. Hamilton, R. Mitchell, I. Powell, J. Campbell, J. Hickman, H. Beckett. Second Row: K. Chapman, C. Risher, T. Spires, J. Williams, J. Jenkins, R. Daniels, E. Stephens, M. Bright, W. Siders, W. Washington, C. Brown, A. Stanley. Third Row: H. Pinckney, R. Mixon, H. Pringle, E. Cain, T. Hudson, D. Bright, R. Bodidson, S. George, E. Martin, M. Cobbs, L. Allen. Fourth Row: R. Beach, K. Pinckney, D. Mitchell, T. George, C. Helton, B. Deloach, A. Hiers, R. Mills, B. Hinz, S. Brown. Back Row: M. Hawkins, J. Dandridge, A. Butler, T. Smoak, T. Cummings.