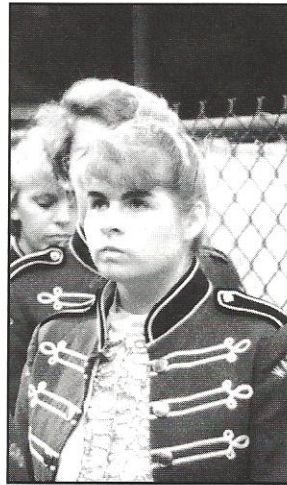
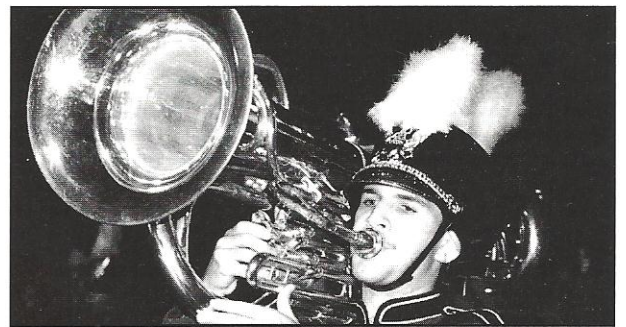


## What Do You Think?



*Q: What did you enjoy most about being in the band?*

“Band gave me a chance to be creative and school-supportive,” said senior Sonja Woods.



“The size of the band gave me a chance to have a close relationship with a variety of people,” said junior Dean Leonard.

Robert Williams, Richard Gethers, Chris Adams, and Bubba Carter form a half-circle around Gail Reardon. This formation was made while the band played “Pop goes the Weasel”.

Jason Rice directs the Band of Blue from the top of a ladder. The ladder was needed so that the band members could see him better.

*Band Classic '91*