



## community

The community and school were intertwined. For proof of this one just needed to look at various booths and presentations at the downtown Christmas Festival and the Rice Festival, the many donations made to the Band of Blue for its 1994 trip to the Rose Bowl parade, the *Press & Standard*, and all the media hype over various sports.

During the Rice Festival and the newly established downtown Christmas Festival the chorus performed and had a concession booth. Many students also participated in the parades during these two festivals. Thirteen girls were also chosen as Rice Planters, the official hostesses of the Rice Festival.

Burger King and Old Tyme Burgers sponsored Band of Blue days. On these days band directors worked in these restaurants with a portion of the proceeds going to the band.

Seniors Karyn Davis and Kim Sapough kept the community informed of what was going on at school as *Press & Standard* correspondents. Their articles ran weekly.

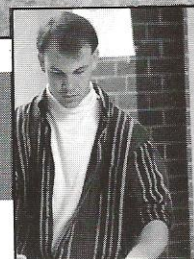
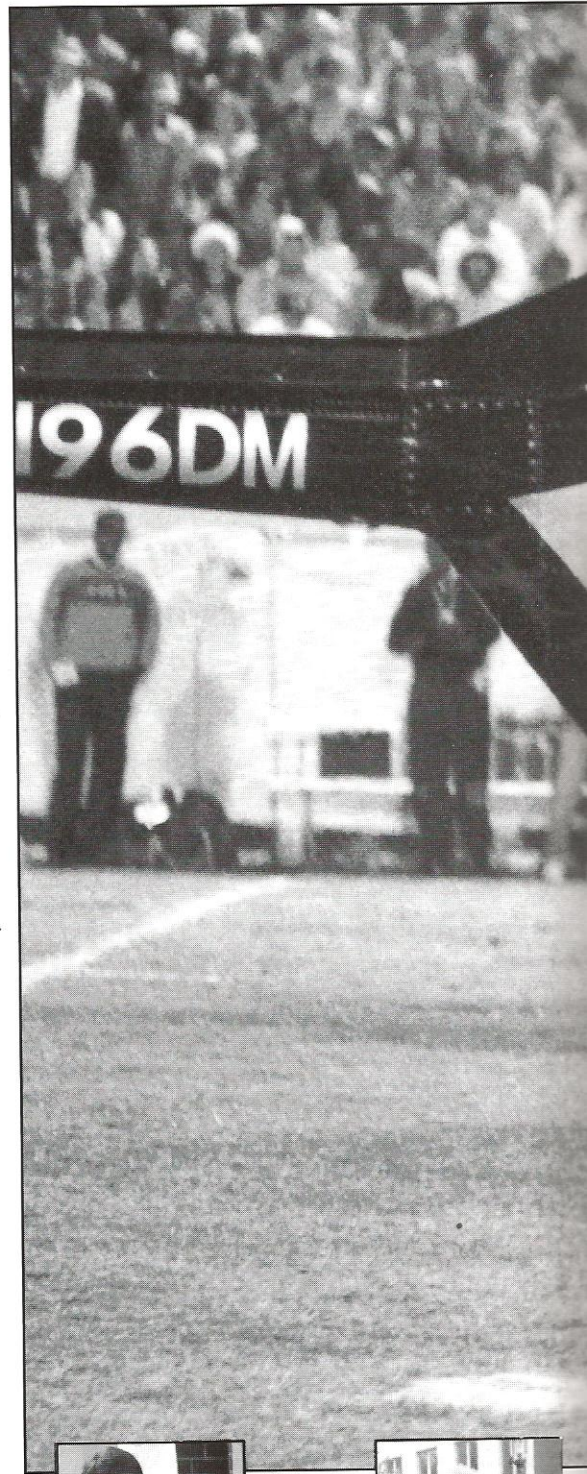
The football team's great season brought the community together as a whole. On football Fridays the whole town seemed to be at bulldog Stadium. Fans began arriving at 5:00 for 8:00 kickoffs.

The school was a major part of the community mainly because the community's future was in the school.

— Bramlett Easterlin

**Walterboro High School on a sunny day. The future of the community was here.**

**Channel 5 Sportscaster Warren Peper makes an impressive arrival at Bulldog Stadium before the Summerville game. This game which was hyped by the media as a "Dream Match" brought a capacity crowd.**



**Michael Risher helps clean up after the flood at school.**



**Mrs. Stephanie Drawd introduces the chorus at the Downtown Christmas Festival.**