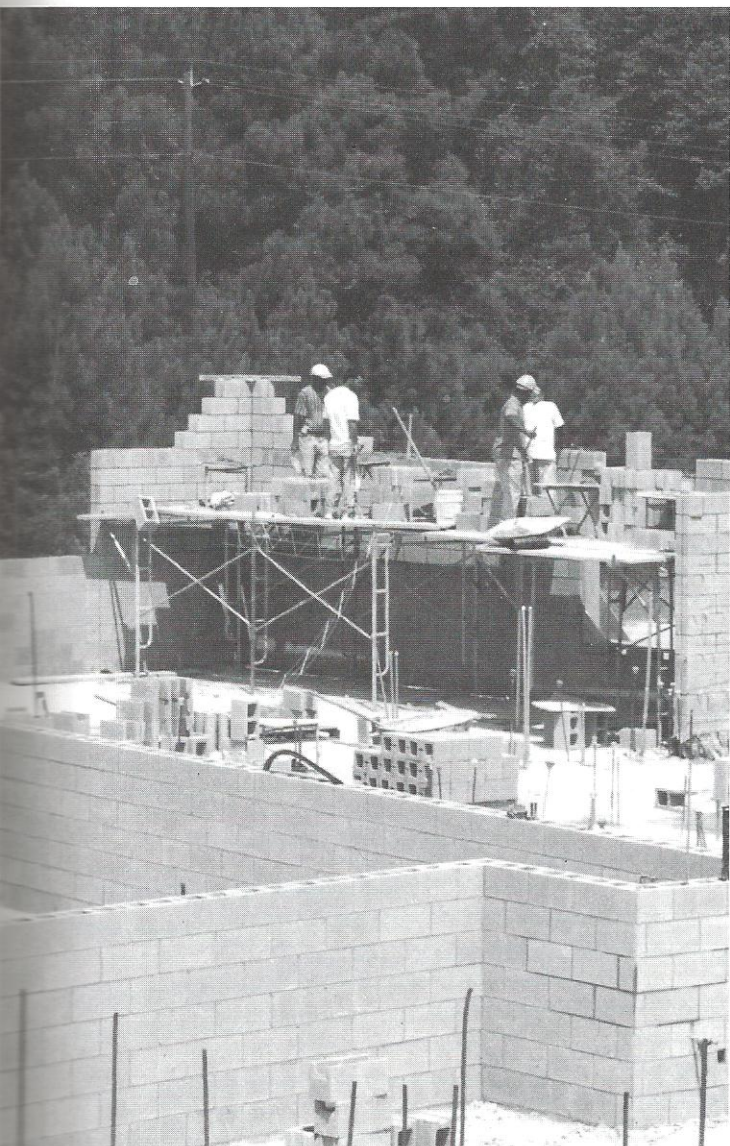


Mr. Clean. With the new building comes new responsibilities. Workers tried to keep the construction area neat.

Please unload contents here. Designated areas with signs reading “unloading zone”, “hard hat area”, and “danger” surrounded the enclosed areas.



Movin' on up. The tall addition keeps on moving. This was the beginning of a two story structure added to the building.

men at work

diggin' in the dirt

The front entrance moved to the student parking lot. The attendance office moved all the way to the other side of the school. Because of changing bus routes, the commons area became extremely crowded every afternoon, but all-in-all, Walterboro High stayed the same. The last year to call it that, in fact.

Because of the lack of exits, leaving school everyday took students anywhere from 10-15 minutes longer than usual. “Before they started having a cop direct us, I used to have the right-away in the mornings before school, but now I am wait-

ing an extra 10 minutes for people to go ahead of me,” senior **Krystal Thomas** said.

Students eventually got used to the changing environment and continued school as usual. “I always have to stop and look out the window as I’m walking to class, just to see how much things have changed since last year,” junior **Brittany Burke** said. The changes may have caused confusion, but for the most part, students looked forward to the new additions --the buildings and the people.

-Paisley Polk



It's everywhere! These supplies are protected by a fence. The students' protection was top priority to the administrators and staff.